

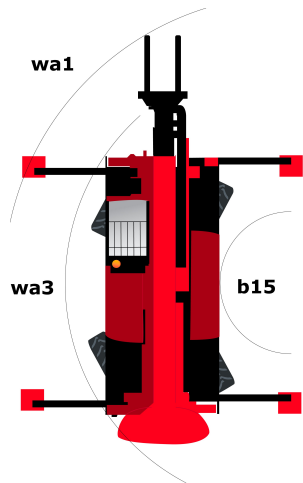
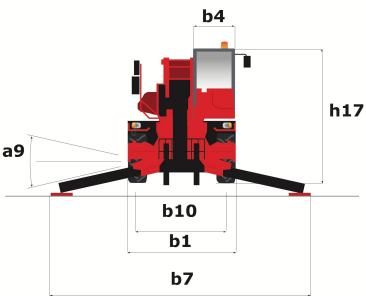
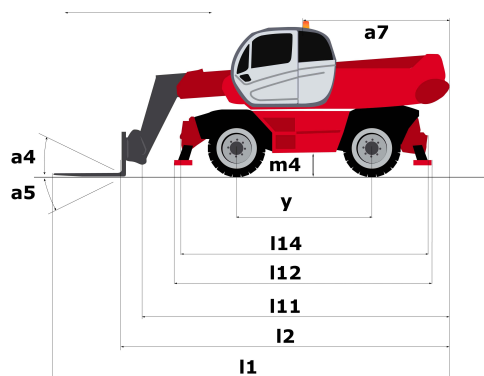
Technical sheet

# **MRT 2550 PRIVILEGE PLUS**

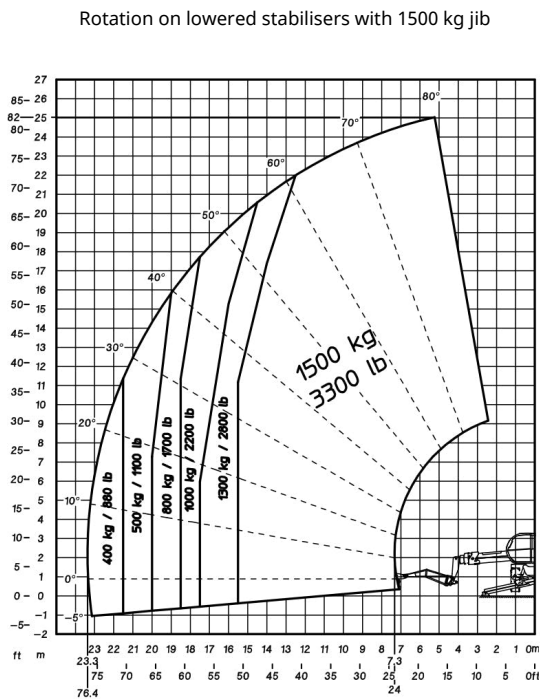
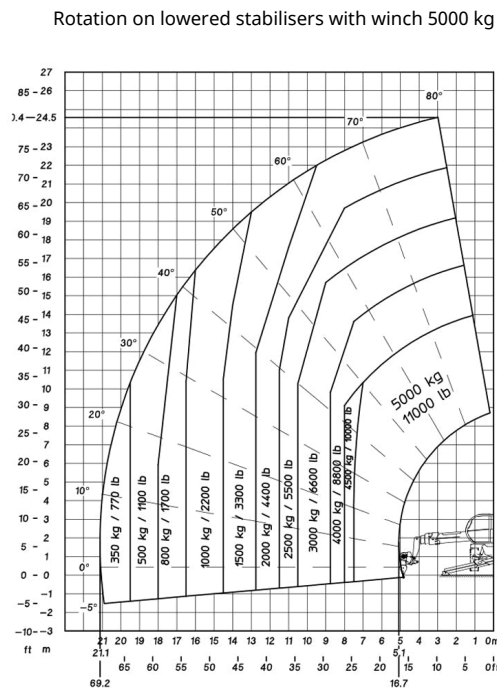
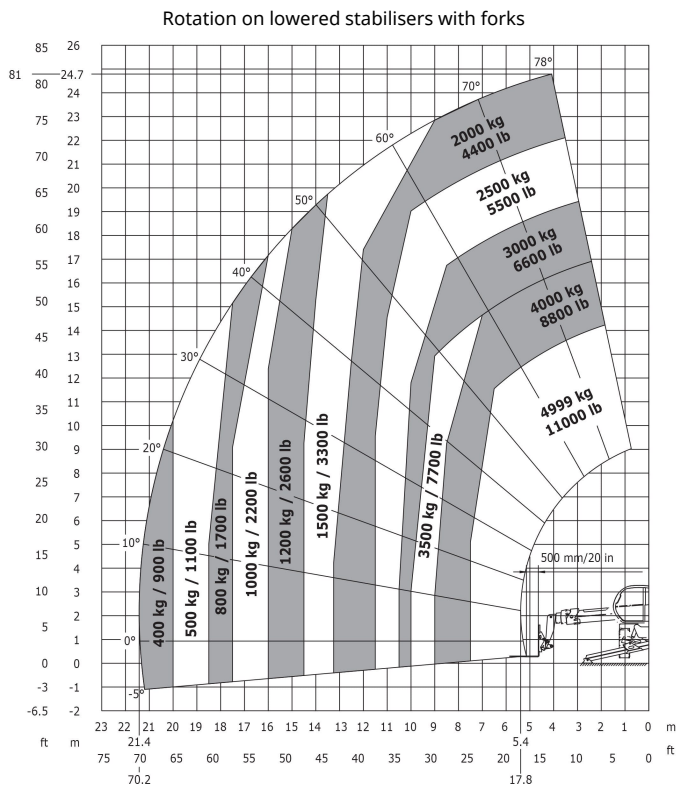
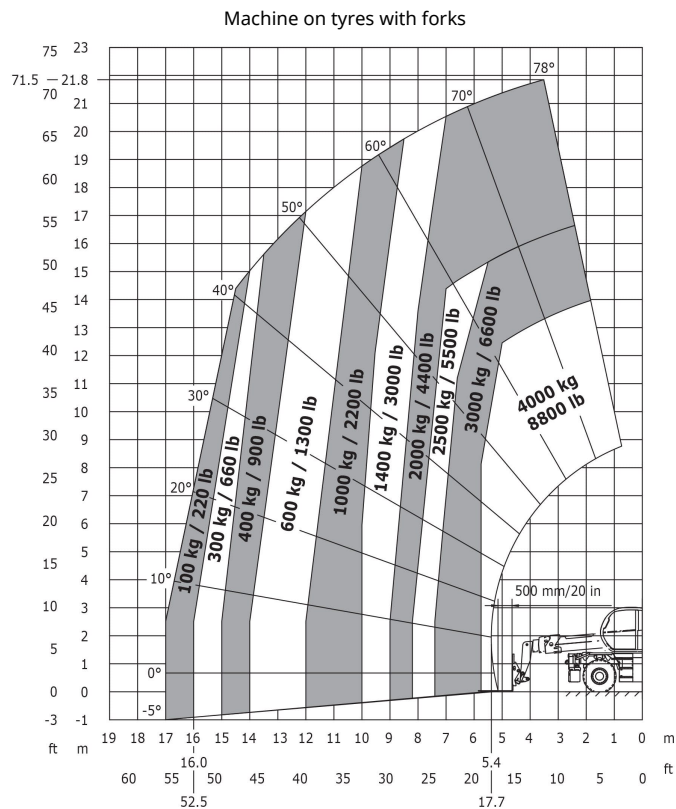
Rotating Telehandlers



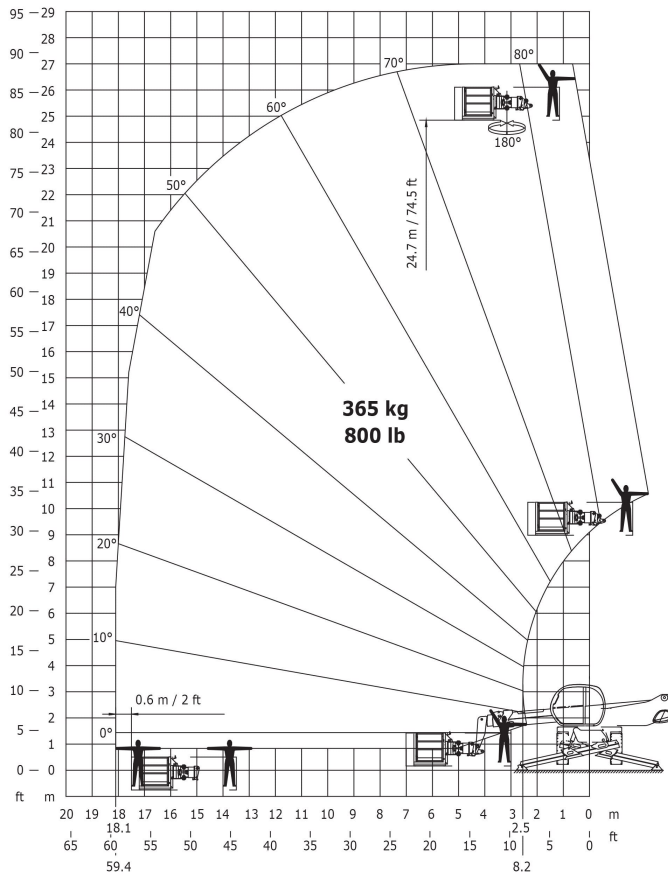
Capacities	Metric	Imperial
Max. capacity	4999 kg	11020.91 lbs
Max. lift height	24.70 m	81 ft
Max. reach	21.40 m	70 ft 3 in
Dimensions		
l2 - Length to fork heel	7.84 m	25 ft 9 in
l1 - Overall length	9.03 m	26 ft 5 in
b1 - Overall machine width	2.49 m	8 ft 2 in
b7 - Overall width with stabilisers extended	5.55 m	18 ft 3 in
h17 - Overall height	3.05 m	10 ft
Wa3 - - Frame outer turning radius	5.23 m	17 ft 2 in
m4 - Machine ground clearance	0.35 m	1 ft 2 in
a4 - Tilt-up angle	13 °	13 °
a5 - Tilt-down angle	102 °	102 °
Standard tyres	Pneumatic	Pneumatic
Standard forks	1200x150x50	47x6x2
Weight	18900 kg	41667.37 lbs
Stabilisers		
Type	Telescopic Duplex	Telescopic Duplex
Controls	Individual or Simultaneous	Individual or Simultaneous
Engine		
Brand	Mercedes	Mercedes
Environmental standards	OM 934 E4-5	OM 934 E4-5
Power	156 hp / 115 kW	156 hp / 115 kW
Max. torque	675 Nm at 1500 rpm	499 ft.lbs at 1500 rpm
Number of cylinders - Capacity	4 - 5130 cm³	4 - 313 in³
Injection	Direct	Direct
Cooling	by Water	by Water
Transmission		
Type	Hydrostatic	Hydrostatic
Max. speed of travel (may vary according to the applicable regulation)	40 km/h	24.85 mph
Drawbar pull	8700 daN	19558 lbf
Parking brake	Automatic negative parking brake	Automatic negative parking brake
Service brake	Hydraulic	Hydraulic
Hydraulics		
Type of pump	Gear pump	Gear pump
Hydraulic flow rate	115 l/min	30.38 gpm
Pressure	275 bar	3988.54 psi
Tank capacities		
Hydraulic oil	225 l	59.44 US gal.
Fuel	305 l	80.57 US gal.
AdBlue Diesel Exhaust Fluid (DEF)	57 l	15.05 US gal.
Noise & vibration		
Noise at driving position (LpA)	77.40 dB(A)	77.40 dB(A)
Noise to environment (LwA)	107 dB(A)	107 dB(A)
Vibration on hands/arms	<2.5 m/s²	<8.2 ft/s²



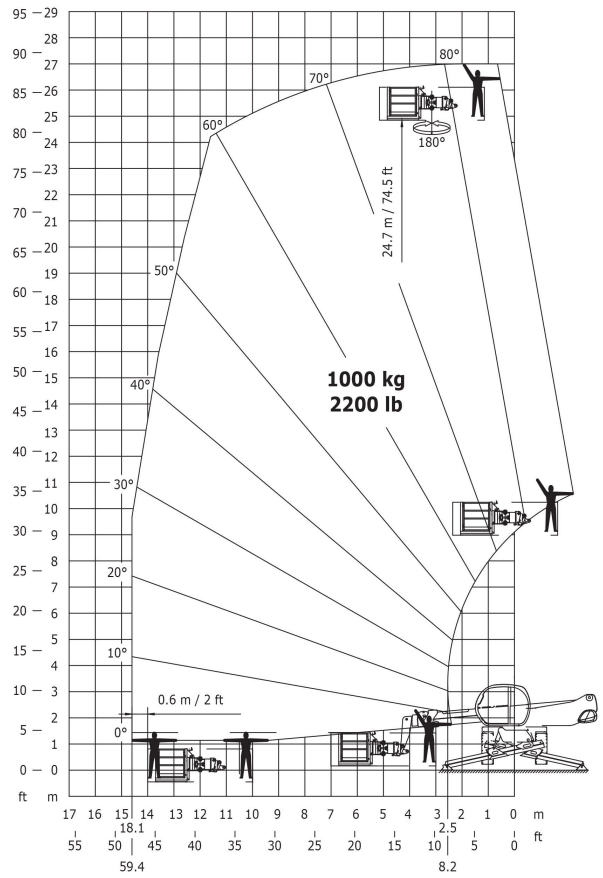
Other data	Metric	Imperial
l12 - Overall length at stabilisers	5.22 m	17 ft 2 in
b7 - Overall width with stabilisers extended	5.55 m	18 ft 3 in
b4 - Overall cab width	0.99 m	3 ft 4 in
l14 - Length of frame	5.35 m	17 ft 8 in
y - Wheelbase	3.05 m	10 ft
a9 - Levelling corrector	8 °	8 °
a4 - Tilt-up angle	13 °	13 °
a5 - Tilt-down angle	102 °	102 °
a7 - Counterweight offset (turret at 90°)	3.18 m	10 ft 6 in
b10 - Front wheel gauge (middle of wheels)	2.05 m	6 ft 11 in
Wa1 - Outer turning radius (with forks)	5.23 m	17 ft 2 in
b15- Inside turning radius	1.70 m	5 ft 8 in

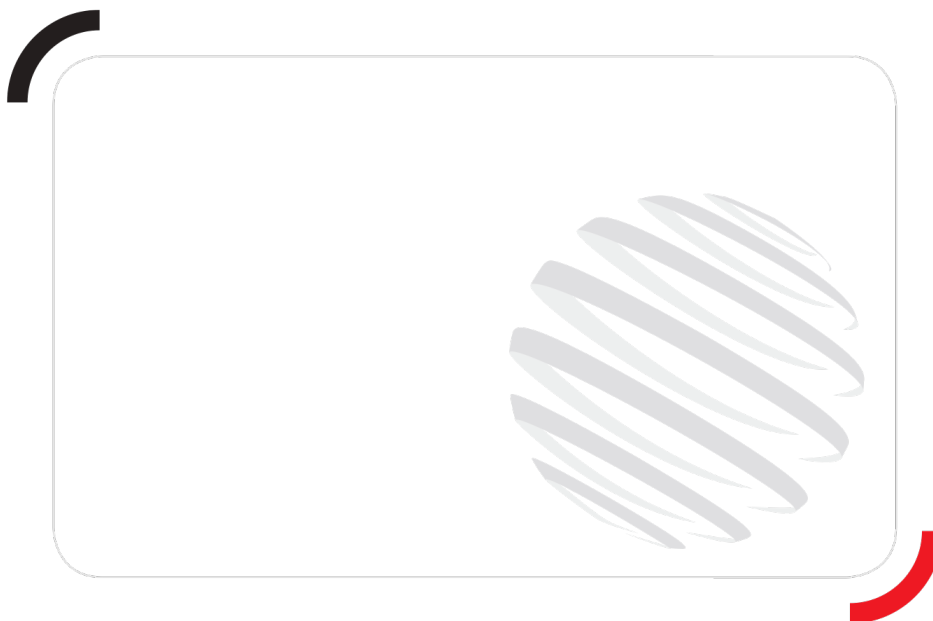


Rotation on lowered stabilisers with 365 kg platform



Rotation on lowered stabilisers with 1000 kg platform





Siège Social  
430 rue de l'Aubinière - 44150 Ancenis Cedex - France  
Tel: +33(0)2 40 09 10 11 - Fax: +33 (0)2 40 09 10 97  
[www.manitou.com](http://www.manitou.com)



This brochure describes versions and configuration options for Manitou products which may be fitted with different equipment. The equipment described in this brochure may be standard, optional or not available depending on version. Manitou reserves the right to change the specifications shown and described at any time and without prior warning. The manufacturer is not liable for the specifications given. For more information, contact your Manitou dealer. Non-contractual document. Product descriptions may differ from actual products. List of specifications is not comprehensive. The logos and visual identity of the company are the property of Manitou and may not be used without authorisation. All rights reserved. The photos and diagrams contained in this brochure are provided for information only.

MANITOU BF SA - Limited company with board of directors - Share capital: 39,547,824 euros - 857 802 508 RCS Nantes